

An introduction to the hair and beauty sector 3001

Knowledge organiser 108

COSHH (Control of Substances Hazardous to Health)

Store

Handle

Use

Dispose of

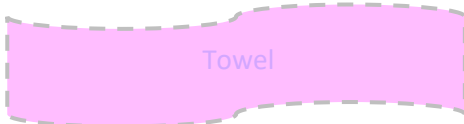


Know your COSHH Warning Symbols	
	Meaning: Very Toxic Substances which if inhaled, ingested or absorbed through the skin can cause extreme serious chronic health risks or death.
	Meaning: Toxic Substances which if inhaled, ingested or absorbed through the skin can cause death or acute or chronic damage to health.
	Meaning: Highly Flammable Substances either gaseous or solid which may readily catch fire in contact with air without any application of energy or liquids having a flash point of equal to or less than 21 degrees Celsius.
	Meaning: Flammable Substances having a flash point equal to or greater than 21 degrees Celsius and less than or equal to 55 degrees Celsius.
	Meaning: Harmful Substances which if inhaled, ingested or absorbed through the skin can cause limited health risks.
	Meaning: Irritant Non-corrosive substances which through immediate, prolonged or repeated contact with the skin can cause inflammation.
	Meaning: Corrosive Substances which, on contact with living tissues, may destroy them.
	Meaning: Explosive Substances which upon heating, explode when partially confined.
	Meaning: Oxidising Substances which give rise to a highly exothermic reaction when in contact with other substances, particularly flammable ones.

Following manufactures instructions, salons policies & local council by laws

Safe and hygienic working practices

PPE (Personal Protective Equipment)



Towel



Gloves
& apron



Data Protection Act



Collecting and storing client and staff data safely. Store in a safe place. Destroy when not needed

Manual Handling Operations Regulation



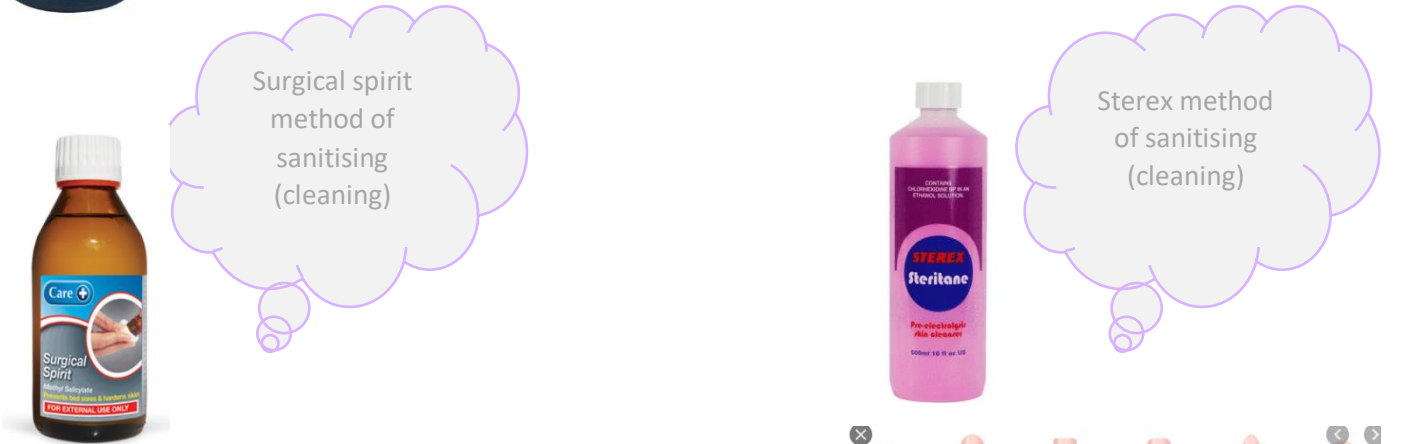
Moving objects safely without injuring your self

Trades Description Act

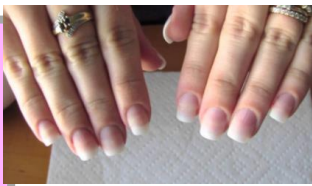


You must not tell the client incorrect information about products prices and services

Sterilisation complete destruction of all microscopic life on a surface. Sanitation



Nail length will depend on the type of design the client can have. Short, medium or long



Nail shapes / occasion
Depends on the design to be created and the occasion.



Cultural
Relating to a particular society and its ideas / customs.



Fashion trends
Depends on the fashion of the era



2D & 3D designs

Nail growth
Will depend on the design and time intervals for client to return

Adverse skin and nail conditions

<p>Onychorrhexis (Brittle nails) (on-ee-ko-rex-is)</p> 	<p>Egg shell nails</p> 
<p>Eczema / dermatitis</p> 	<p>Koilonychia (nail curves upwards) (coy-lo-nic-ee-ah)</p> 
<p>Onychomycosis (on-ee-com-ee-co-sis)</p> 	<p>Onychophagy (on-ee-co-fa-jee)</p> 
<p>Paronychia (pa-ro-nic-ee-ah)</p> 	<p>Hang nail</p> 
<p>Whitlow</p> 	

Techniques / products / tools & themes

Stickers /
transfers



Striping tape



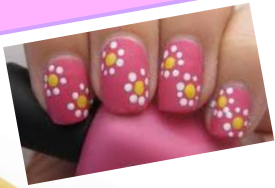
Striping
brush



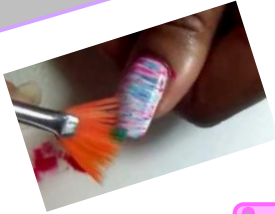
Gems



Dotting



Fan brush



Glitter



Foil



Tools



Marbling



Themes

