

PPE (Personal Protective Equipment)

Towel, gown, plastic cape



Data Protection Act



Collecting and storing client and staff data safely. Store in a safe place. Destroy when not needed

Public liability insurance



Protect yourself when working with the public as you may cause accidental damage to them or their clothing.

COSHH (Control of Substances Hazardous to Health)

- Store
- Handle
- Use
- Dispose of



Know your COSHH Warning Symbols	
	Meaning: Very Toxic Substances which if inhaled, ingested or absorbed through the skin can cause extreme serious chronic health risks or death.
	Meaning: Toxic Substances which if inhaled, ingested or absorbed through the skin can cause death or acute or chronic damage to health.
	Meaning: Highly Flammable Substances either gaseous or solid which may readily catch fire in contact with air without any application of energy or liquids having a flash point of equal to or less than 21 degrees Celsius.
	Meaning: Flammable Substances having a flash point equal to or greater than 21 degrees Celsius and less than or equal to 55 degrees Celsius.
	Meaning: Harmful Substances which if inhaled, ingested or absorbed through the skin can cause limited health risks.
	Meaning: Irritant Non-corrosive substances which through immediate, prolonged or repeated contact with the skin can cause inflammation.
	Meaning: Corrosive Substances which, on contact with living tissues, may destroy them.
	Meaning: Explosive Substances which upon heating, explode when partially confined.
	Meaning: Oxidizing Substances which give rise to a highly exothermic reaction when in contact with other substances, particularly flammable ones.

Following manufactures instructions, salons policies & local council by laws

Washing machine @ 60*
Method of sterilising gowns & sponges



UV light method of sterilising brushes



Cleanser

Removes make-up, grease & dirt from the surface of the skin.

Toner

Freshens the skin after cleansing & removes any

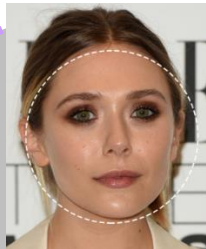
Moisturiser

Forms a seal over the skin
Softens the skin

Rebalancing
For oily combination skin

Hydrating
For dry, mature & de-hydrated skin

Calming
Sensitive normal balanced skin



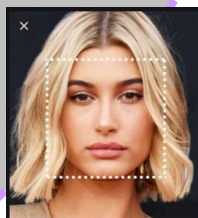
Face shape

Every client has a different face shape and makeup is used to define facial features



Cultural & gender

Relating to a particular society and its ideas / customs.



Skin diseases and disorders

Eczema

Very dry skin, scaly and flaky.
Can be red and itchy



Psoriasis

Thick, raised, dry silvery scales, often found behind the ears / hairline.

Impetigo

Small blisters on the skin and develops into large yellow scabs.



Ringworm

Pink patches on the scalp develop into round, grey scaly areas with broken hairs. If left untreated will cause hair loss.



Herpes simplex (cold sore)

Blisters form around the lips, cheeks and nose. The blisters are likely to spread

Warts

Small compact raised growth of skin can be light or brown in colour, found on the face and neck



Stye

Small boil at the base of the eyelash follicle. It is sore raised and red there may be a lot of swelling.

Acne

Inflamed whiteheads, blackheads and pustules in various degrees of congestion.



Bacterial infection

Swelling, redness and heat in the affected area. This is often accompanied by pain and pus or 'weeping' from the wound



Viral infection

Something that can reoccur the virus is in your system

Fungal infection

Skin changes, including red and possibly cracking or peeling skin

Skin types

Skin type	Appearance	
Normal	Even smooth surface Even colour tones Unblemished	
Greasy or oily skin	Shiny Blemished Open 'pores' (follicles) Blackheads Pustules	
Dry	Flaky areas Tight feeling after washing Dull or matt surface Lacking sebum (oil)	
Combination skin	Combination of greasy skin - generally in the 'T' zone (forehead, nose & chin) Drier, clear skin on the cheeks Most common in teenagers Over production of sebum in the T zone from the sebaceous gland	

A **contra-action** is a reaction to a treatment or product that is not as severe as an allergic reaction but that is unexpected



A **contra- indication** is something, which does not allow a treatment or service to take place



If a client displays any symptoms then products need to be removed with cool water and consult a doctor





Brushes
Used for detailing and small areas of application



Sponges
Used to apply face paint and create different effect

Face paint
Used to create the look and add depth / tone and shading

Gems
Add sparkle and enhance designs



Glitter
Adds sparkle and interest to a design



Transfers
Quick and simple application to enhance face painting