

COSHH (Control of Substances Hazardous to Health)

- Store
- Handle
- Use
- Dispose of



Know your COSHH Warning Symbols			
	Meaning: Very Toxic Substances which if inhaled, ingested or absorbed through the skin can cause extreme serious chronic health risks or death.		Meaning: Harmful Substances which if inhaled, ingested or absorbed through the skin can cause limited health risks.
	Meaning: Toxic Substances which if inhaled, ingested or absorbed through the skin can cause death or acute or chronic damage to health.		Meaning: Irritant Non-corrosive substances which through immediate, prolonged or repeated contact with the skin can cause inflammation.
	Meaning: Highly Flammable Substances either gaseous or solid which may readily catch fire in contact with air without any application of energy or liquids having a flash point of equal to or less than 21 degrees Celsius.		Meaning: Corrosive Substances which, on contact with living tissue, may destroy them.
	Meaning: Flammable Substances having a flash point equal to or greater than 21 degrees Celsius and less than or equal to 55 degrees Celsius.		Meaning: Explosive Substances which upon heating, explode when partially confined.
			Meaning: Oxidising Substances which give rise to a highly exothermic reaction when in contact with other substances, particularly flammable ones.

Following manufactures instructions, salons policies & local council by laws

PPE (Personal Protective Equipment)

Towel, gown, plastic cape

Gloves & apron



Sterilisation complete destruction of all microscopic life on a surface.



Electricity at Work Regulation

Check every 6 months to a year

Check plug before use

Check the dryer has a filter

Check the cable

Do not touch with wet hands



Label, report & remove faulty equipment

Make sure the appliance has been PAT tested

Check the temperature

Store in a safe place

Un-plug when not in use



Heated rollers used to give body and soft curl



Wand to achieve a varied curl

Heated equipment used for hair up



Bendy heated rollers to achieve a spiral curl

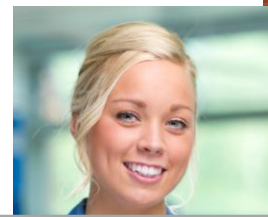


Double barrel tongs, gives a finger waved affect



Straighteners used to straighten or give a soft curl / wave

Face shape



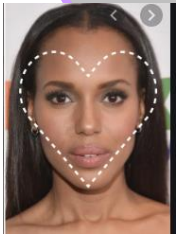
Life style

Choosing a style that suits how the client lives



Head and face shape

Every client has a different head and face shape and not all styles suit



Hair density, texture, type, elasticity & porosity

Hair density

How much hair someone has on his or her head



Elasticity

The hairs ability to stretch and return to its original length

Porosity

The hairs ability to absorb moisture



Hair Texture

How thick or fine each individual hair is

Hair types

Asian / Oriental

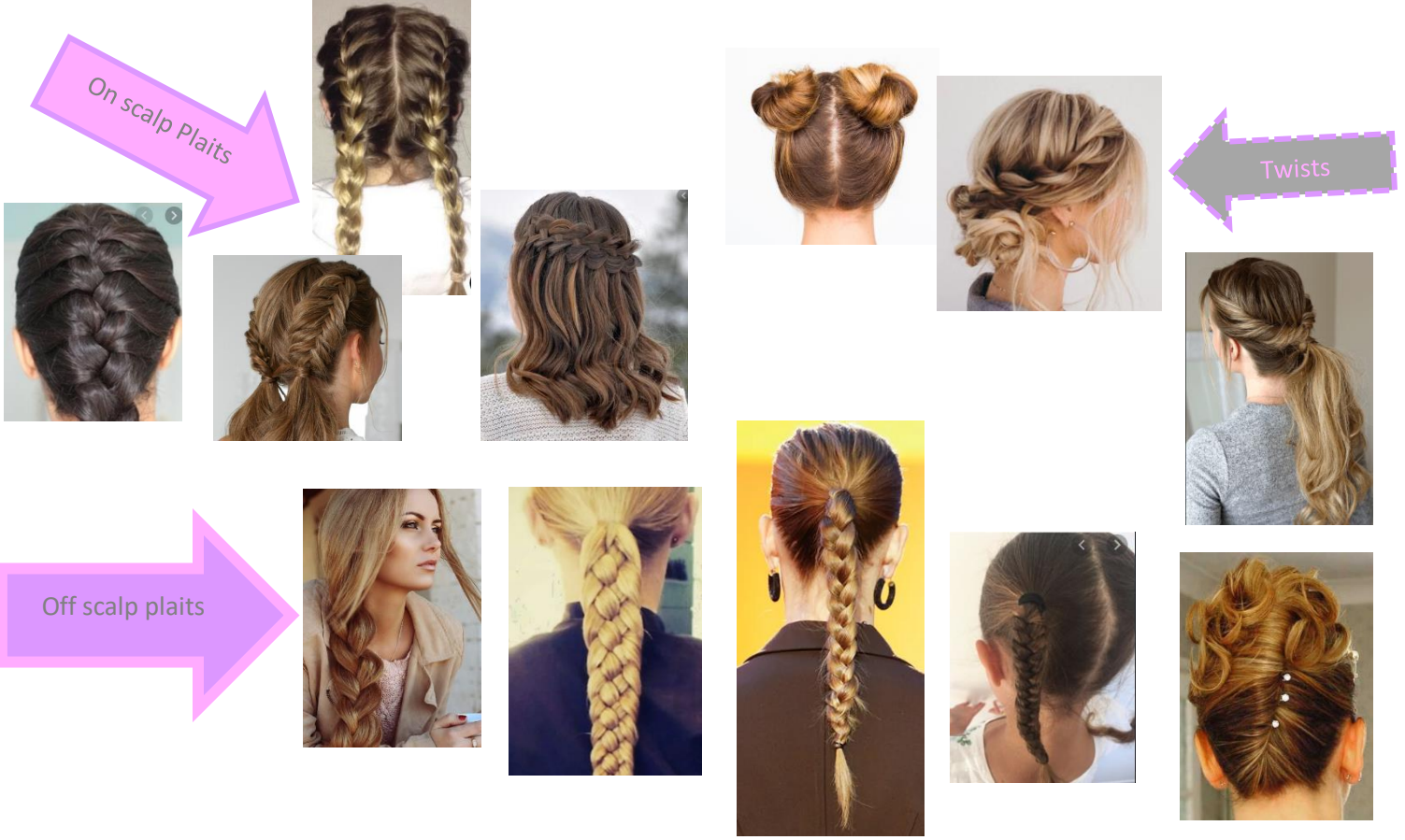
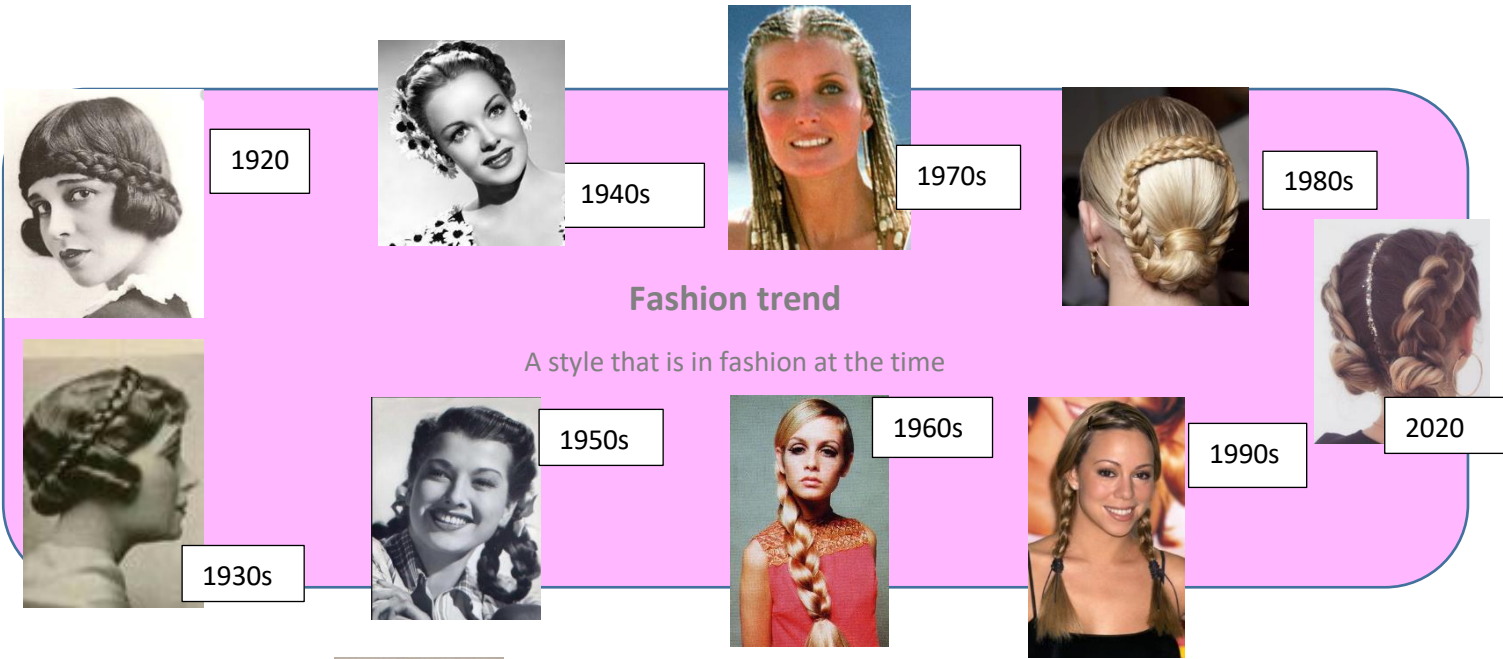
Caucasian / European

African



Finishing product

Hair spray, wax, serum, shine spray



Hair growth patterns

The way in which the hair grows out of the scalp



Widows peak

The hair grows upwards and forwards forming a strong peak

Cowlick

The hair is lifted up and round as if a cow has licked the hairline

Nape whorl

The hair grows in a circle at the nape

Double crown

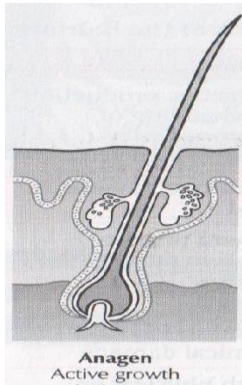
You will see two circles of hair around the top of the head



Hair growth cycle

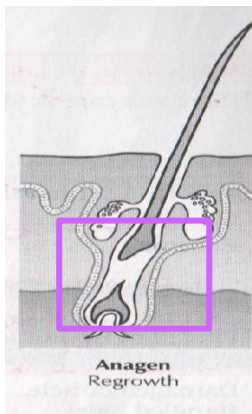
Anagen

When the hair begins to grow



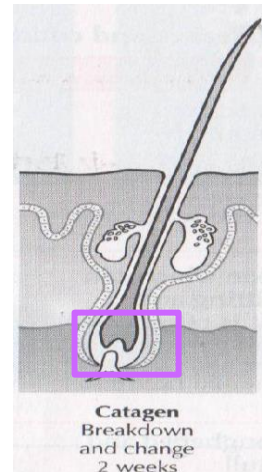
Early anagen

The new anagen period is when the hair begins to grow again



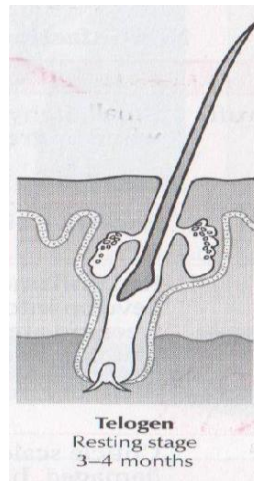
Catagen

When the hair stops growing

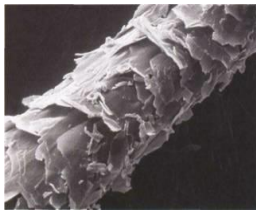


Telogen

The period of rest for the dermal papilla



Scalp disorders / infections / infestations



Dandruff	Small, itchy, dry scales, white or grey in colour
Psoriasis	Thick, raised, dry silvery scales, often found behind the ears
Seborrhoea (greasiness)	Excessive oil produced on the scalp or skin by our oil-producing gland.
Damaged cuticle	Cuticle scales are roughened and damaged, creating a dull appearance.
Impetigo	Small blisters on the skin and develops into large yellow scabs.
folliculitis	Small yellow pustules with hair in the centre
Ring worm	Pink patches on the scalp develop into round, grey scaly areas with broken hairs. If left untreated will cause hair loss.
scabies	Red irritating spots and lines under the skin caused by mites burrowing in the skin.
Head lice	Small parasites with six legs live off the scalp by biting and sucking the blood. They re-produce by laying eggs (nits) and cementing them to the hair shaft. They can be very difficult to remove

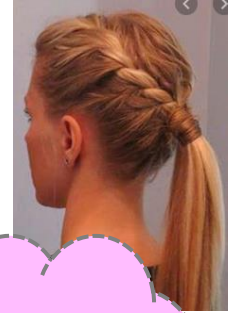
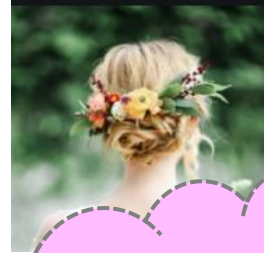


Ornamentation
Something used for decoration





Cultural
Habits, traditions, and beliefs of a society



Denman brush
detangling hair and
smoothing

Prong comb
used for
sectioning
and finishing

Wide
toothcomb used
for detangling



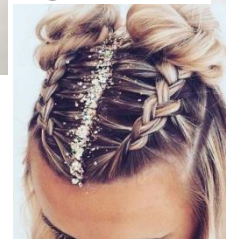
Tail comb
sectioning and
smoothing



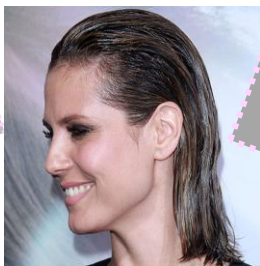
Tools for creating plaits /
twists

Hair types and conditions

Occasion
Work styles,
Wedding, Prom,
Interview, Meal out,
Party



Greasy hair



Caused by over active
sebaceous glands.

Dandruff
affected



Caused by over
production and shedding
of epidermal cells

Normal hair



Normal amount of sebum.
Smooth and shiny

Dry hair



Caused by over
use of chemicals
or heated
equipment