

Safe and hygienic working practices

PPE (Personal Protective Equipment)

For the client

Gown, towel, plastic cape



For the stylist



COSHH (Control of Substances Hazardous to Health)

Store

Handle

Use

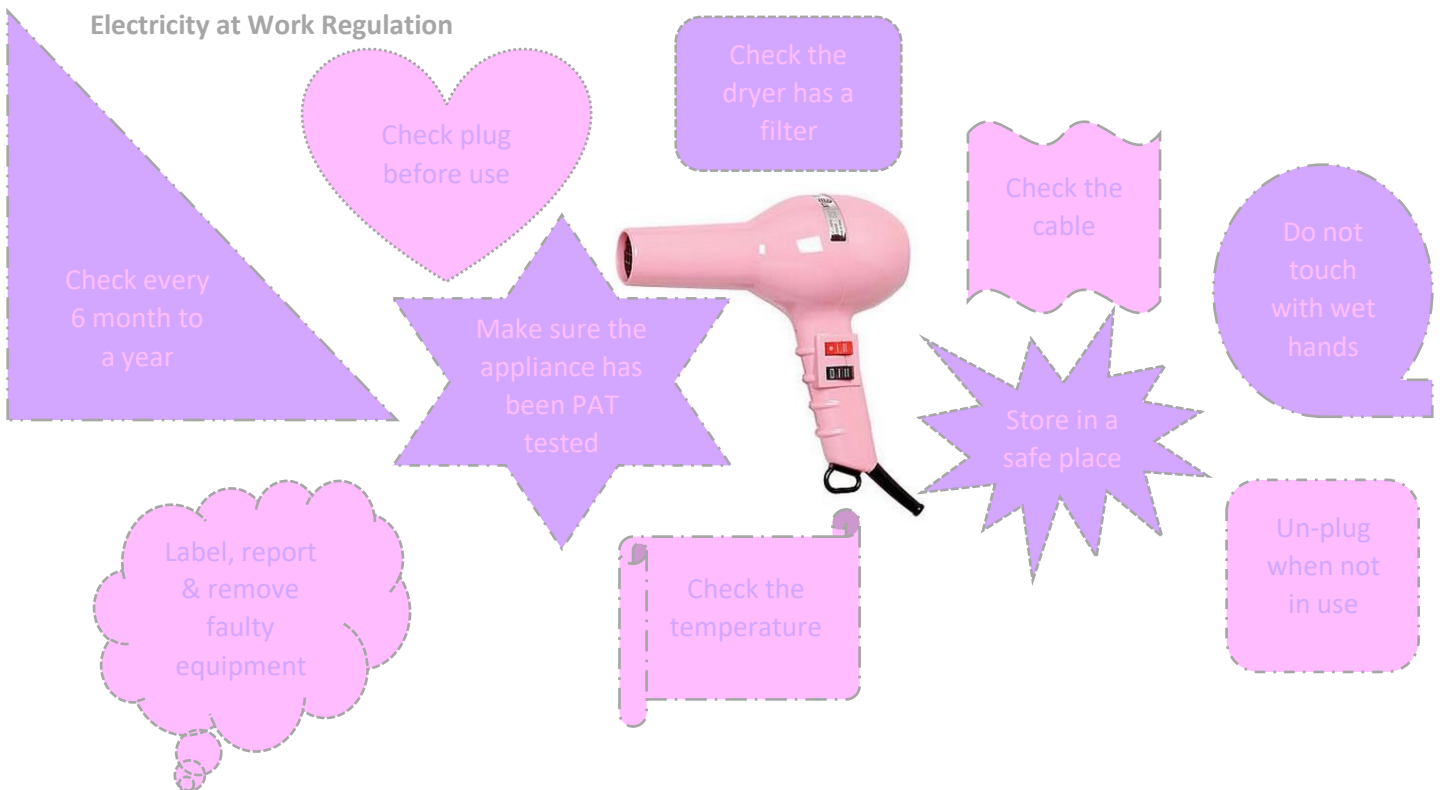
Dispose of



Know your COSHH Warning Symbols	
	<b>Meaning: Very Toxic</b> Substances which if inhaled, ingested or absorbed through the skin can cause extreme, serious chronic health risks or death.
	<b>Meaning: Toxic</b> Substances which if inhaled, ingested or absorbed through the skin can cause death or acute or chronic damage to health.
	<b>Meaning: Highly Flammable</b> Substances either gaseous or solid which may readily catch fire in contact with air without any application of energy or liquids having a flash point of equal to or less than 21 degrees Celsius.
	<b>Meaning: Flammable</b> Substances having a flash point equal to or greater than 21 degrees Celsius and less than or equal to 55 degrees Celsius.
	<b>Meaning: Harmful</b> Substances which if inhaled, ingested or absorbed through the skin can cause limited health risks.
	<b>Meaning: Irritant</b> Non-corrosive substances which through immediate, prolonged or repeated contact with the skin can cause inflammation.
	<b>Meaning: Corrosive</b> Substances which, in contact with living tissues, may destroy them.
	<b>Meaning: Explosive</b> Substances which upon heating, explode when partially confined.
	<b>Meaning: Oxidising</b> Substances which give rise to a highly exothermic reaction when in contact with other substances, particularly flammable ones.

Following manufactures instructions, salons policies & local council by laws

Electricity at Work Regulation



## Sterilisation

Barbicide  
chemical  
method of  
sterilising



Steam  
method of  
sterilising



UV light  
method of



## The hair structure

### Cuticle

The outer layer of hair. Looks like fish scales and overlap.  
Regulates the amount of chemical that is absorbed

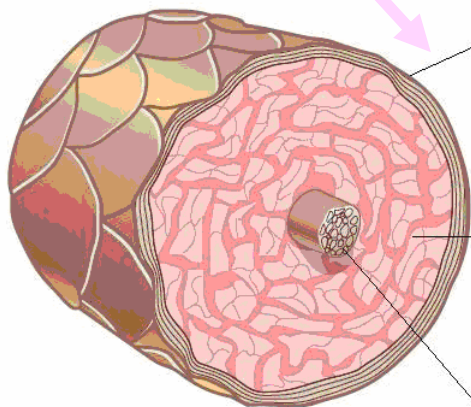
### De tangling hair

Wide toothcomb starting at the points working up to the roots to avoid damaging the cuticle



### Cortex

The middle part of the hair. Hydrogen and salt bonds are rearranged within the cortex when drying and styling hair. Natural hair pigment Melanin (brown / black) and pheomelanin (yellow / red) pigments are distributed.

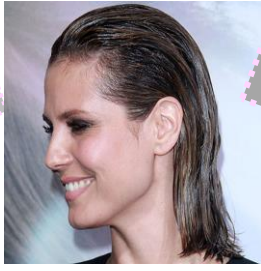


### Medulla

Has no real purpose  
It exists in only medium to course hair.

## Hair types and conditions

Greasy hair



Caused by over active sebaceous glands.

Dandruff affected



Caused by over production and shedding of epidermal cells

Normal hair



Normal amount of sebum. Smooth and shiny

Dry hair



Caused by over use of chemicals or heated equipment

## Shampoos & conditioners



### Shampoo

Used to cleanse the hair. Shampoo twice to ensure the hair is completely clean

### Conditioner

Used to smooth down the cuticles, replace lost moisture, adds shine, and helps with detangling, returns the hair back to its natural pH balance